

2024 Ingham County 4-H State Show Test

Name _____

Checked by _____

Club _____

Score _____

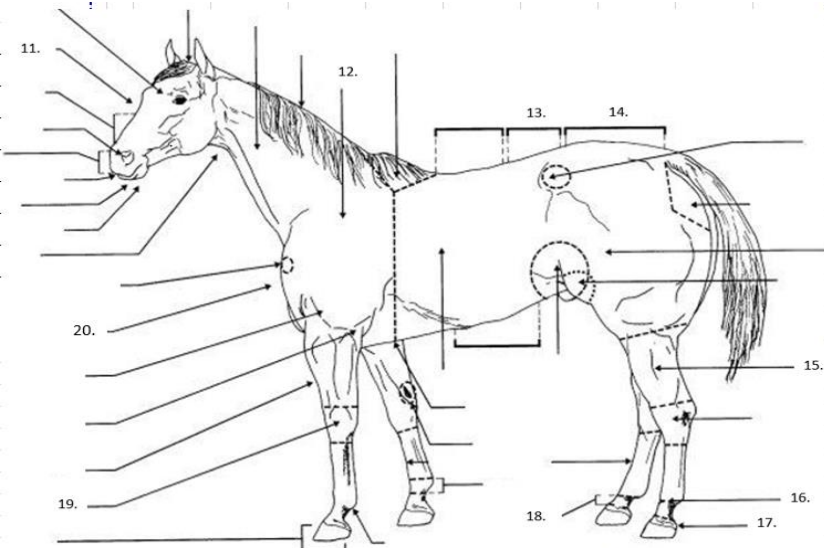
Points _____

PleaseRead each question on this test carefully. You must answer thoroughly for full credit

Answer the following questions with either a T (True) or F (False)

- 1 _____ The Knee is located between the forearm and the cannon.
- 2 _____ In Western classes when using split reins the ends of the split reins should always fall on the same side as the rein hand.
- 3 _____ The Trot is known as the foundation gate?
- 4 _____ Amino Acids are the "building blocks" from which proteins are made.
- 5 _____ The horse should always be lead from the Left side or Near side.
- 6 _____ In Western classes, a horse 6 years or older can use a snaffle or shanked bit?
- 7 _____ In Hunt Seat classes your hands should be over the saddle.
- 8 _____ The term Rubber neck is used to describe a horse with a stiff neck and easy to rein.
- 9 _____ Many brown horses are mistakenly called Black.
- 10 _____ A horse with draft horse breeding is commonly called cold blooded.

Parts of the Horse (fill in the blank)



- | | | |
|----------|----|-------|
| Back | 11 | _____ |
| Chest | 12 | _____ |
| Coronet | 13 | _____ |
| Croup | 14 | _____ |
| Face | 15 | _____ |
| Fetlock | 16 | _____ |
| Forearm | 17 | _____ |
| Gaskin | 18 | _____ |
| Hock | 19 | _____ |
| Knee | 20 | _____ |
| Loin | | _____ |
| Muzzle | | _____ |
| Pastern | | _____ |
| Shoulder | | _____ |

2024 State Show Written Test

Multiple Choice

- 21 What two things help a horse distinguish types of feed?
- Sight, looking at feed
 - Taste buds on the tongue
 - Sense of smell
 - Sound, how crunchy it is
- 22 Which type of saddle has a front jockey, seat jockey and back jockey?
- English Saddle
 - Dressage Saddle
 - Western Saddle
 - Side Saddle
- 23 What term describes a horse with little training?
- Young Horse
 - Baby Horse
 - Blue Horse
 - Green Horse
- 24 What is the distance from inprint to imprint, by a horse's foot when completing one step called?
- Stride
 - Step
 - Gait
 - Trot
- 25 How long do bot larvae remain in the stomach maturing before being passed out in the manure?
- 3 months
 - 6 months
 - 9 months
 - 12 months
- 26 What gait is known as the foundation gait?
- Walk
 - Trot
 - Canter
 - Pace
- 27 In a Hunt Seat class, when asked to stop and reverse, which way do you turn?
- Turn away from the rail
 - Turn towards the rail
 - Turn either way
 - Cut across the ring
- 28 Name two ways to lessen fear in a nervous horse.
- Slow movements
 - Fast movements
 - Calm attitude, calming words
 - Remove him from the scary object

2024 State Show Written Test

- 29 What do you call an unaltered adult male horse?
- Colt
 - Gelding
 - Stallion
 - Mare
- 30 What is an acute abdominal pain in a horse called?
- Worms
 - Puncture
 - Founder
 - Colic
- 31 Name the wide pieces of leather that are over the top of the stirrup leathers, on a western saddle.
- Cinch
 - Skirt
 - Fender
 - Panels
- 32 Thrush is a disease caused by unsanitary conditions and bacteria that affects what part of the foot?
- Bulb
 - Frog
 - Heel
 - Sole
- 33 In the 4-H Pledge what do you pledge to greater loyalty?
- Head
 - Heart
 - Hands
 - Health

Answer the following questions with either a T (True) or F (False)

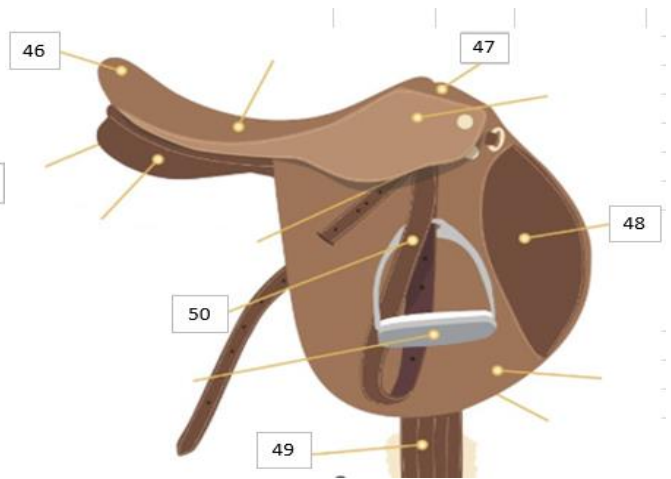
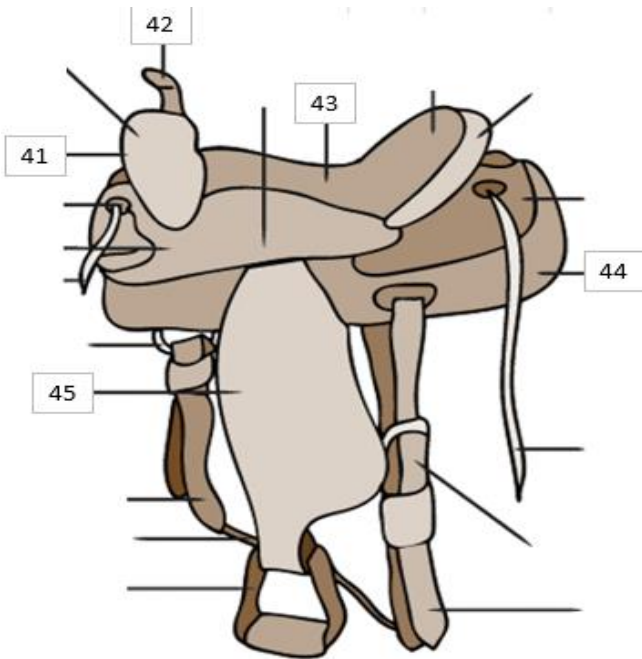
- 34 _____ Thrush is considered a Blemish?
- 35 _____ You must be 13 or older to be a MI State Horse Show Delegate?
- 36 _____ At about age 6 a horses permanent intermediate incisors erupt?
- 37 _____ A helmet is only allowed in English and Gymkhana classes.
- 38 _____ Oats contain higher protein than corn?
- 39 _____ A Blemish describes any mark or deformity that diminished the beauty but does not affect the usefulness of a horse.
- 40 _____ Hay, straw and pasture are clasified as forages?

2024 State Show Written Test

- 41 _____
- 42 _____
- 43 _____
- 44 _____
- 45 _____
- 46 _____
- 47 _____
- 48 _____
- 49 _____
- 50 _____

Saddle parts to choose from.

- Back Jockey
- Cantle
- Cinch
- Fender
- Flap
- Fork
- Girth
- Gullet
- Horn
- Knee Roll
- Pommel
- Seat
- Skirt
- Stirrup
- Stirrup Leather

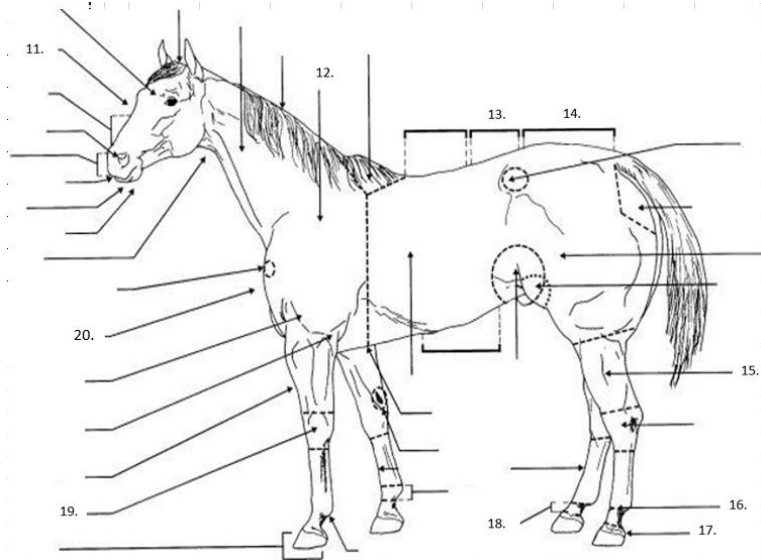


ANSWER KEY

True or False

1. True (HH8) 2. Trud (HH24) 3. False (HH17, walk) 4. True (HS33) 5. True (HH52) 6. False (2006 SRR 256)
 7. False (2002 SSR 13) 8. False (HH51) 9. True HH4 10. True (HH56)

Parts of the Horse



- Back
- Chest
- Coronet
- Croup
- Face
- Fetlock
- Forearm
- Gaskin
- Hock
- Knee
- Loin
- Muzzle
- Pastern
- Shoulder
- Withers

- 11 Face
- 12 Shoulder
- 13 Loin
- 14 Croup
- 15 Gaskin
- 16 Fetlock
- 17 Coronet
- 18 Pastern
- 19 Knee
- 20 Chest

Multiple Choice

21. B & C (HS p27) 22. C (HH p31) 23. D (HH p40) 24. A (HH p18) 25. C (HS p56) 26. A (HH p17) 27. C (2006 SRR 13) 28. A & C (HH p51) 29. C (HS p29) 30. D (HS 56, 50) 31. C (HH p31)
 32. B (HH p50) 33. B

True or False

34. True (HS p13) 35. True (new in 2025 it will be 12-19) 36. False (HS p15) 37. False (HH p54)
 38. True (HS p40) 39. True (HS p12) 40. True (HS p37)

